

SMAT RESEARCH CENTRE IN NUMBERS



3,500 m² in 2 premises:



State-of-the-art laboratory equipment for 6 million €



110 projects in 10 years. 14 closed in 2020, 23 ongoing. 2 funded by Horizon 2020



80 employees involved
7 full time researchers



15 partnerships with academic partners (Universities and research centres)
38 industrial partners

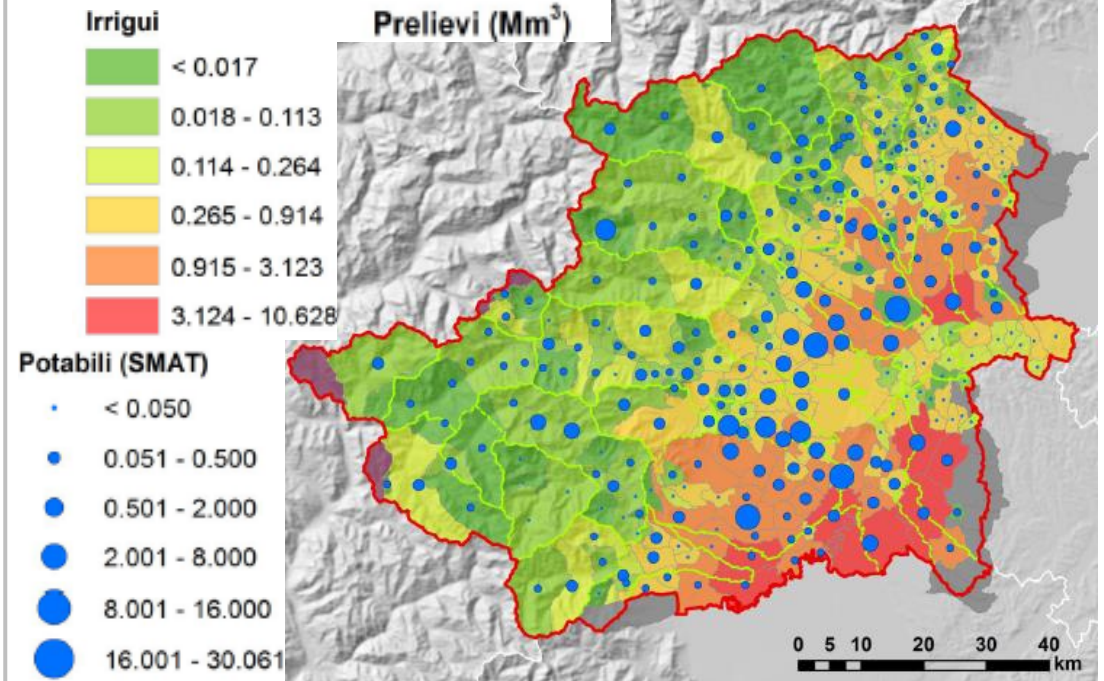
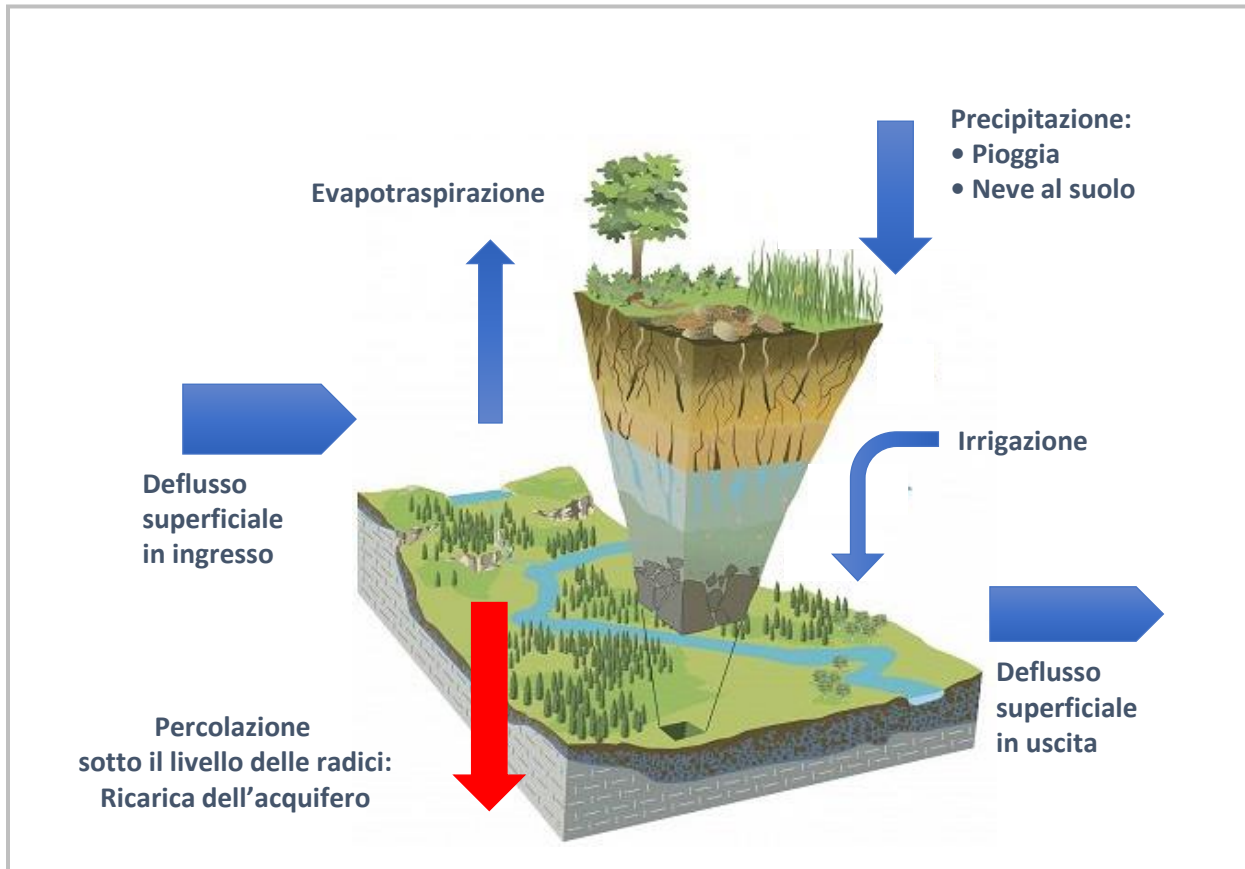


83 scientific publications (2016-2020)





IMPACTS OF CLIMATE CHANGE ON UNDERGROUND WATER RESOURCES IN THE METROPOLITAN AREA OF TURIN





BIOCIDE AND BIOWYSE



aqu^{isense}
technologies



ThalesAlenia
Space

GLBiocontrol

UNIVERSITÀ
DEGLI STUDI
FIRENZE

AERO SEKUR

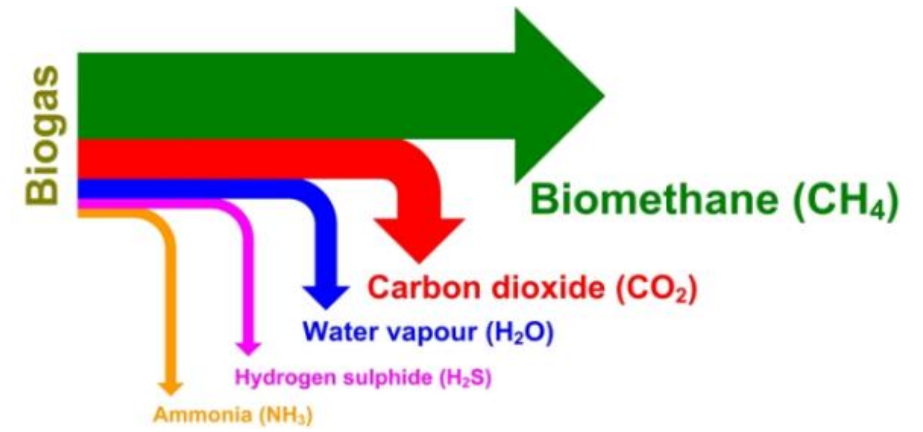


LIEWENTHAL ELECTRONICS
Software and Electronics

BIOWYSE



RESOURCES RECOVERY FROM WASTEWATER





smat Centro Ricerche

The image shows a long, modern building with a facade of light-colored stone or concrete panels. The building features a series of tall, narrow, arched windows that run along its length. The sky is a clear, pale blue. The building is situated on a green lawn.

Thank you for your attention



Nobel prize Rita Levi Montalcini

“La carenza idrica, in particolare nei paesi in via di sviluppo, rappresenta una delle maggiori cause di gravi malattie, specialmente nel Continente africano.

Auguro ai molti giovani che intendono dedicarsi alla ricerca in questo campo di avere la possibilità di svolgere tale attività presso la SMAT, Società leader nel settore idrico, avvalendosi di tecnologie all'avanguardia”.

Rita Levi Montalcini